



One School, One Vision...

10 YEAR DEVELOPMENT PLAN



10 ÷ 10 = 1

Phases

Years

Vision



10 YEAR DEVELOPMENT PLAN

1 VISION

A first choice prep school for a first class education, for now, for life, for generations to come.



1 MISSION

To ensure that every pupil can achieve their full potential within a safe, secure and happy learning environment.

EDGE GROVE IS A VIBRANT AND SUCCESSFUL INDEPENDENT DAY AND BOARDING SCHOOL FOR BOYS AND GIRLS BETWEEN THE AGES OF 3 TO 13 CHARACTERISED BY A GENUINE COMMITMENT TO THE PURSUIT OF EXCELLENCE.

We are fortunate to have such an elegant and impressive listed building as our focus for the school, set within 28 acres of beautiful parkland. It is therefore with a sense of pride and purpose that our 'One School' vision has been prepared to provide a framework for future development and capital projects, incorporating teaching and the enhancement of the learning environment well into the future, whilst maintaining the heritage of the School.

As pupil numbers are at their highest, the School feels that it is now time to consider its future plans, and how best to develop the school. Our 'One School' vision has been designed to encompass the entire school, uniting both Pre-Prep and Prep schools to create a positive environment to further enhance the education of our pupils.

The aim is to set down a cohesive framework, to improve the facilities and offer pupils the opportunity to move to their senior schools having experienced a school life they will cherish for the rest of their lives.

To realise our 'One School' vision, it is essential to make capital investment in the school's infrastructure. Much has been achieved through the installation of new facilities in existing classrooms; however, essential areas of the school now need to be upgraded. Our 'One School' vision is designed to set down a development strategy for the next 10 years to achieve this objective.

Specific areas have been identified that need to be upgraded in order to provide the first class education expected from a modern preparatory school. We aim to provide facilities which will allow the delivery of a creative

curriculum, essential collaborative planning between teachers and for children to move easily around the school in an even safer, secure and comfortable environment.

Our 'One School' vision will allow the school to develop and keep pace with changing educational needs, standards and legislation and to continue to provide first class teaching and learning facilities.

This ambitious plan requires a considerable level of investment and, whilst Edge Grove allocates a significant proportion of its finances to the development plan each year, it will take a much longer time to realise our development goals if we solely rely on the school's contribution.

Therefore, we are reaching out to the Edge Grove community, past and present, to support us in order that we can reach our goals at the earliest possible date.

By investing now, Edge Grove will secure its future and improve the quality of its educational facilities for generations to enjoy,

We hope you are as excited about the development plans as we are and look forward to your feedback and support.

Ben Evans, Headmaster

PHASE 1, 2 & 3

PROGRESS SO FAR...

In the last five years Edge Grove has updated and refurbished many of its facilities including two science labs, created a home economics kitchen, introduced Forest School, and renovated the lighting in the theatre, sports hall and classrooms.

The next 10 phases are planned over 10 years and, having completed one phase and with another two in progress, we are well on the way.





This project is a pre-requisite for the Lower School building plans detailed in Phase 4. The dilapidated structures situated along the listed Walled Garden have been removed and the listed wall has been restored. The new estates building will provide essential storage for the Creative Arts Faculty, sports equipment and Forest School.

Due for completion Autumn 2017.



We have extended the Pre-Prep to provide three form entry from Reception to Year 2 with the addition of modern and innovative classrooms. **Completed in August 2016**

"These classrooms maximise the space with efficient storage and the new SMART boards are fantastic - no noise, heat, shadows or reduction in image quality over time." Prep-School Teacher



The recently acquired School House premises in Aldenham are in the process of being refurbished so that the Edge Grove Pre-School can be relocated offsite.

From September 2017, this purpose designed facility will deliver a first class dedicated Pre-School for our youngest pupils, offering exciting and age-appropriate facilities, whilst retaining close links with our neighbouring main school site.

PHASE 4

LOWER SCHOOL BUILDING

SINCE 1996, THE LOWER SCHOOL (YEARS 3 AND 4), HAS BEEN HOUSED IN TEMPORARY CLASSROOMS LOCATED IMMEDIATELY TO THE REAR OF THE MAIN HOUSE. THESE TEMPORARY CLASSROOMS ARE UNSATISFACTORY AND DETRACT FROM THE HISTORIC SETTING OF THE MAIN HOUSE.

There is both a practical need and an educational necessity to replace these outdated and tired structures, and to relocate the Lower School into a new self-contained building.

Once planning permission has been obtained for the new Lower School building, the two temporary classrooms, together with the former Scout Hut immediately to the rear of the Main House, will be removed. A new pedestrian route will be created to the rear of the school to improve pupil movement around the site and reinforce our 'One School' vision.

Our vision is for a new, contemporary designed and sustainable Lower School building located to the west of the existing astroturf playground. The quality, modern design has an innovative curved roof that seeks to create a welcoming porch which opens up the multipurpose hall of the new Lower School to the school grounds.

Internally, the building will accommodate six spacious classrooms, a multi-function hall incorporating an open plan library as well as pupil and staff toilets, storage, an ancillary meeting room and Head of the Lower School office.

We will aspire to the objective that a minimum of 20% of the total value of materials specified on the project will be derived from recycled and re-used content in the products and materials selected.





"I never felt as if school was a chore at Edge Grove because of the incredible atmosphere, friendships and fun we all had on a daily basis." Ex Pupil

PHASE 5

RELOCATE KITCHEN/DINING ROOM TO A NEW CENTRAL LOCATION

KITCHEN AND DINING

CURRENTLY THE KITCHEN, FOOD PREPARATION, STORAGE AND DINING FACILITIES ARE LOCATED WITHIN THE CENTRAL CORE OF THE GROUND FLOOR OF THE EIGHTEENTH CENTURY PART OF THE MAIN HOUSE.

Whilst adequate, these facilities fall well below current standards offered by other preparatory schools. There is a need for a new kitchen and dining resource centrally located within the school that has the capacity to deliver a total of up to 600 meals every lunchtime in three successive sittings.

Our vision is to undertake a sensitive refurbishment of the existing Stable Block in connection with the construction of a new contemporary extension to provide a 'state of the art' kitchen and dining resource including a new food hall style servery. This will cater for all pupils and staff, providing a welcoming and inviting focal point for the school to meet at lunchtimes whilst reinforcing our 'One School' vision.

ART DEPARTMENT

EDGE GROVE'S ARTWORK IS OF A VERY HIGH STANDARD. THERE IS HOWEVER AN ESSENTIAL EDUCATIONAL NEED FOR AN IMPROVED ART RESOURCE IN A DEDICATED BUILDING.

Our vision is to relocate the art department from the first floor of the Stable Block into its own dedicated building with excellent natural daylight.

The Arches are to be enclosed to provide a weather-protected route between the Main House and the new Kitchen/Dining resource, which will incorporate new lockers and notice boards and become the central information heart of the School for parents and pupils.

WALKWAYS

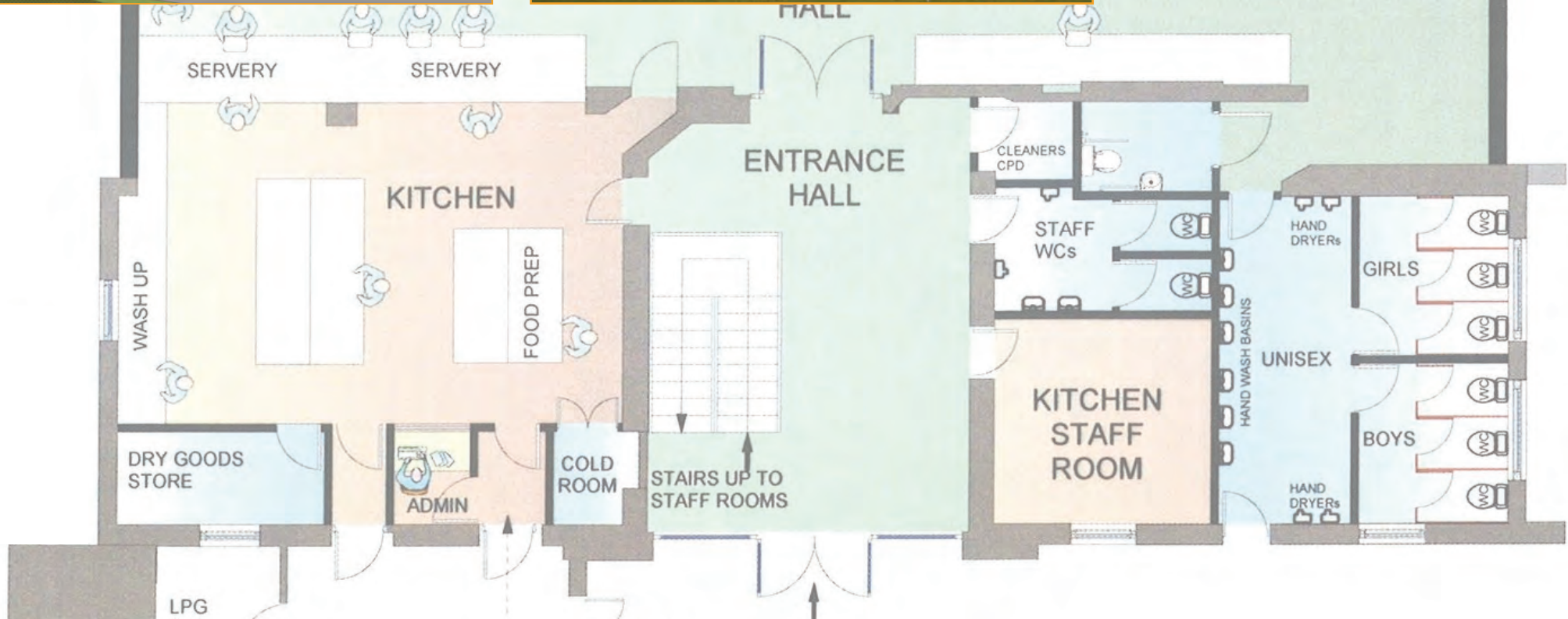
OUR VISION IS TO INTRODUCE A NEW TREE LINED PEDESTRIAN ROUTE TO RUN PARALLEL TO THE PADDOCK PLAYING FIELD.

This new route will provide a safe and practical means of access to the new kitchen and dining resource whilst promoting our 'One School' vision by providing a dedicated route to all areas of the school and linking Pre-Prep, Lower, Middle and Upper Schools.





TIMBER CLAD
STRUCTURAL
COLUMNS



PHASE 6

RECONFIGURE THE GROUND FLOOR OF MAIN HOUSE

THE RELOCATION OF THE KITCHEN, FOOD PREPARATION, STORAGE AND DINING ROOM TO THE NEWLY CONVERTED/EXTENDED STABLE BLOCK WILL FREE SPACE IN THE MAIN HOUSE ALLOWING A RECONFIGURATION OF THE EXISTING LAYOUT.

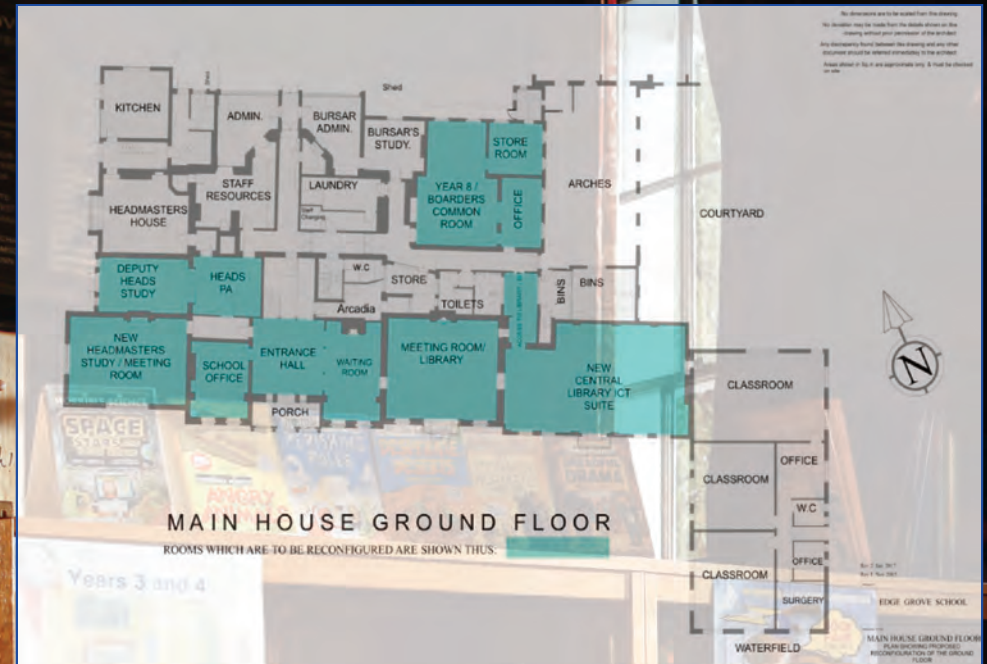
With an increase in administration staff there is a requirement for additional office space. There is also an educational need to provide a library and study area for everyday use by both day and boarding pupils and a social need to reinstate the boarders' common room.

The reconfiguration of the ground floor of the Main House will create a Headmaster's Study which will incorporate a relaxing seating area to welcome parents together with a meeting table to hold both staff/governor and visitor meetings. The Deputy Heads' study will be relocated to the former Headmaster's study.

The School Office is to be relocated across the entrance hall into the existing waiting room. An enlarged waiting room will be provided in the main entrance hall by the removal of the partition separating the present School Office from the entrance hall.

The former kitchen/wash-up areas will be converted to provide a boarders' common room conveniently located next to the entrance to the Headmaster's courtyard and adjoining the Medical Centre.

The former dining room is to be converted into a new dedicated library and computer room incorporating study areas to allow pupils to research topics whether by reference to books or via supervised use of the internet. There will also be areas for personal reading and private study.



“Edge Grove has always been supportive of our children, in the class we know what an important foundation it has given our children to



room and on the sports field. We will always be thankful for this as
build upon.” Past parent



TREE PLANTING

During the last ten years, a number of trees throughout the school grounds have been lost due to disease, age and natural elements.

A new tree planting initiative will be introduced to plant trees of varying species over the next ten years, providing a diverse mix of woodland throughout the grounds.

The new tree planting initiative will commence with the planting of Architectural trees interwoven with low level hedging along the proposed new pedestrian access to the 'Pigsty' Sports Area and the creation of a 'Stumpery' in Cub Wood to enhance the Forest School.

PRESERVE AND MAINTAIN THE HISTORIC FABRIC OF THE BUILDINGS

Considerable investment has been expended in recent years on the maintenance of the fabric of the school's historic buildings. This has included the regular redecoration of the main house and other historic buildings together with additional repairs and maintenance being undertaken.

Whilst the fabric of the historic buildings will continue to be maintained, our vision includes the restoration of the stable block as part of creating a new kitchen and dining resource and the sensitive restoration of the northern wall of the Walled Garden as part of the plans to relocate the Estates Yard.

PHASE 7

TO EXTEND THE EXISTING SPORTS CHANGING FACILITIES

WHILST CHANGING FACILITIES HAVE BEEN UPGRADED WITHIN THE EXISTING SPORTS HALL, THESE FACILITIES NEED TO BE EXTENDED FURTHER.

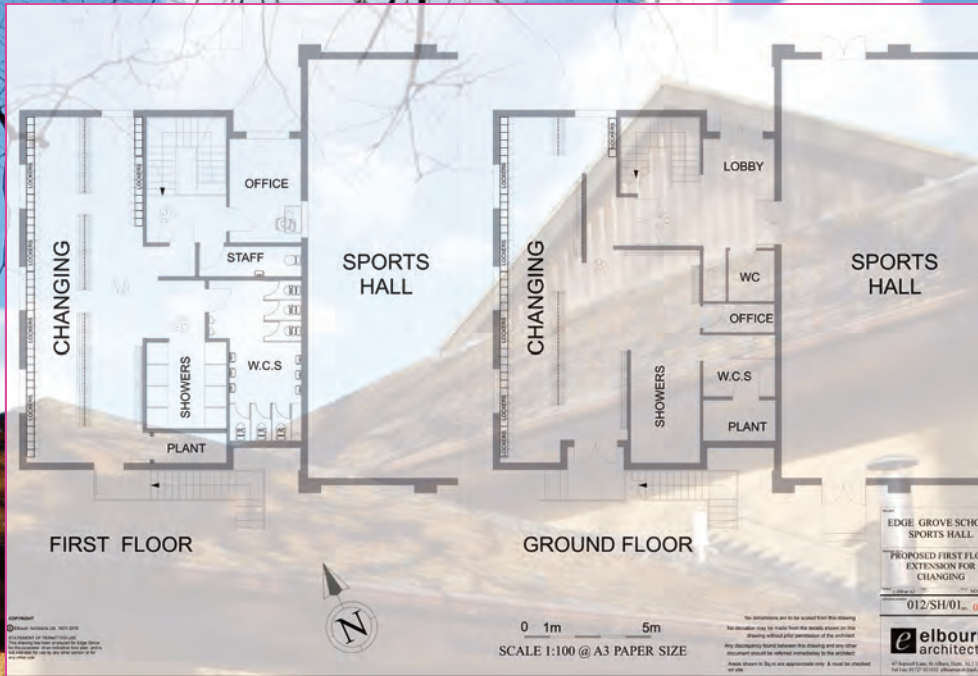
There is no separate changing area for visiting schools, and staff changing facilities are inadequate.

Planning permission was obtained in August 2009 to extend the existing sports hall but there was a reluctance to implement this proposal due to the impact on what is regarded as a very attractive pedestrian route within the site.

It is proposed to extend the existing single storey changing rooms into a new two storey facility to provide additional pupil/staff/visitor changing rooms at first floor level. Although this proposal has been listed as a separate phase, there is every likelihood that the works will be undertaken at the same time as the construction of the new Performing Arts building.

At the same time, a smaller extension will be added to the existing Music Room which will then be converted to replace the two classrooms lost following the demolition of the Waterfield Building and to provide a dedicated Design and Technology teaching space.





“There are so many different sports at Edge Grove and everyone gets a chance to play matches against other schools.” Current pupil

PHASE 8

TO PROVIDE A DEDICATED BUILDING FOR THE PERFORMING ARTS

CURRENTLY THE THEATRE (ASSEMBLY HALL) IS USED FOR MUSIC, DRAMA AND DANCE. THE SCHOOL HAS NOW OUTGROWN THIS SPACE AS THE DEMAND FOR CONCERTS, PRODUCTIONS AND SHOWS INCREASE.

There is a demand for a new building, centrally located within the school, to accommodate 200 people, providing a larger stage and associated facilities to aid the ever increasing number of childrens' activities and performances.

Our vision is to demolish the Waterfield Building originally built in the 1970s, and construct a new sustainable building suitable for the Performing Arts.

The new building will contain an auditorium for 200 people with music, drama and dance studios. It will also provide the opportunity to re-plan the pedestrian access to the front of the school which will enhance the visual aspect of the grade II Listed main house.





“The best thing I’ve ever done is a production of Bugsy Malone because we all did it together and it turned out to be amazing” Past pupil

PHASE 9

TO PROVIDE ADDITIONAL SPORTING FACILITIES

EDGE GROVE OFFERS OVER 25 SPORTS AND ALL PUPILS ARE ENCOURAGED TO TAKE PART IN GAMES AND SPORTS WHICH THEY ENJOY NOT ONLY FOR SUCCESS BUT ALSO FOR FUN AND FITNESS.



ALL WEATHER PITCHES

In order to keep pace with changing educational standards, there is a need for two 'all weather' sports surfaces. This will enable a greater use of sports facilities during periods of inclement weather when matches/fixtures are cancelled due to waterlogged/frozen facilities. 'All weather' sports surfaces are increasingly being introduced at most preparatory schools.





UPGRADE THE CRICKET PAVILION

Approaching Edge Grove through the main entrance, one of the striking features is the sports field and Cricket Pavilion. The pavilion is in need of a complete overhaul/redevelopment in order to provide modern facilities to an appropriate standard. As yet no designs have been commissioned but this scheme offers an excellent opportunity for sponsorship/naming rights of the new Pavilion.



LEVELLING THE 'PADDOCK' PLAYING FIELDS

A school's sporting heritage can be defined by the excellence of its facilities. The Paddock has long been an area compromised by the sloping terrain and therefore is only used for Colts football/rugby and rounders. By levelling this area, and installing suitable drainage, the Paddock will be available for the use of all sports across all age ranges.



"I love the space and landscapes at Edge Grove. There is nothing better than watching a cricket game sat in the sun with a fantastic Edge Grove match tea" Current parent

CONSTRUCTION OF NEW SWIMMING FACILITIES

CONSTRUCTION OF A SINGLE STOREY STRUCTURE TO ENCLOSE A NEWLY REFURBISHED SWIMMING POOL, WITH NEW CHANGING FACILITIES, SHOWERS AND TOILETS.

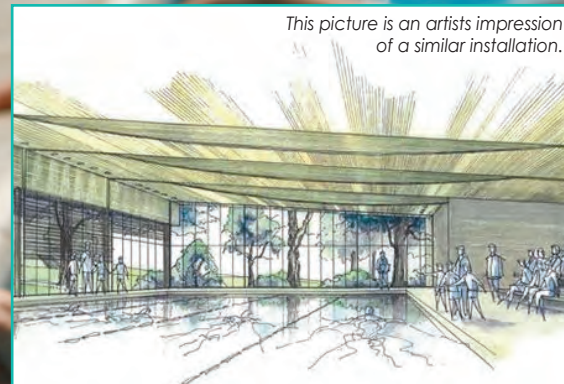
Edge Grove has long been very fortunate to have its own outdoor Swimming Pool but the changing rooms/toilet facilities are tired and inadequate for a school in the 21st century.

Whilst refurbishment of this facility has been considered, the cost has always been outweighed by the actual use. Invariably, the swimming pool is only used for three months of the year, being May – July, and even then, dependent on weather conditions.

There is growing interest across all ages in enhance the swimming pool to provide support to potential swimming scholars by improving the training environment

Our vision is to seek planning permission for a sensitively designed, single storey, semi-glazed permanent structure to enable the pool to be utilised throughout the year to allow the school's curriculum to include swimming programmes from Reception to Year 8.

It is intended that the swimming pool will be refurbished to create an impressive facility capable of hosting swimming galas as well as being a useful venue to be made available to the parent body and local community.



“The swimming galas are brilliant. We all sing our house chants and make as much noise as possible to cheer on our teams” Year 4 pupil

WAYS OF GIVING AND SUPPORT

WAYS OF GIVING AND SUPPORT

Philanthropy is at the core of any successful fundraising project and we understand that giving is a very personal decision that comes from the heart. No matter how large or small, every penny counts so if you are able to support Edge Grove in achieving its 'One School' vision there are several ways in which you may contribute.

A SINGLE DONATION

A cash donation can be made by bank transfer, credit/debit card, cheque or standing order.

AN ONGOING DONATION

These will continually support the school and provide a predictable income which allows for better financial planning. Regular gifts may be established by either standing order or direct debit, either monthly, quarterly or annually.

COMPANY MATCHING GIFT SCHEMES

Many companies will match an individual employee's gift to a registered charity. Please inform the Development office if your employer offers this facility.

LEGACIES

A legacy or a bequest is a gift of cash, shares, or property left to others in one's Will. As it is a gift given after one's lifetime, it can be an easier, and potentially more substantial donation.

GIVING FROM WAGES OR PENSION PAYMENTS

Provided that your current (or former) employer runs a Payroll Giving scheme, you can authorise them to deduct from your salary, or pension payment, a one-off donation or regular donations to Edge Grove School. Send the Development Office any documents required and once set up, your donations will be made by bank transfer directly to Edge Grove School from the Payroll Giving scheme provider.

GIFT OF SHARES

Donating shares to Edge Grove School is a very practical way to raise funds. Please discuss with the Development office prior to carrying out the transaction.

INCREASE YOUR DONATION WITH GIFT AID

As a UK taxpayer, Gift Aiding your donation increases its value to Edge Grove School by 25%, at no extra cost to you. To Gift Aid your donation, simply complete the Gift Aid declaration at the bottom of the donation form. Note: Corporate donations are not eligible for Gift Aid; however, the donation may be treated as an allowable expense, thereby making a saving on corporation tax.

RESOURCE AND SUPPORT

If you are unable to donate a monetary gift but can give support in the form of non-financial gifts, such as musical instruments, books, an item for auction, or your time to help with fundraising activities, we would love to hear from you. All support is gratefully received. Please contact the Development office if you are able to help in any way.

IF YOU WOULD LIKE TO SPEAK TO THE DEVELOPMENT OFFICE FOR MORE INFORMATION, OR TO RECEIVE A DONATION FORM, PLEASE CONTACT

Tel: +44 (0)1923 855724
development@edgegrove.com

ASPIRATION

CREATIVITY

INDEPENDENT THINKING

DISCERNMENT



Our Guiding Principles are the foundations on which we base teaching, learning and social development at Edge Grove.

The eight principles were created and produced collaboratively by our pupils and staff as a 'whole school' project.

These Guiding Principles are on display in the heart of the school and serve to remind the whole community of our common purpose and goals.

CURIOSITY

CONFIDENCE

SELF-MOTIVATION

GLOBAL AND LOCAL RESPONSIBILITY