



Leaving a Legacy...

A GIFT FOR THE FUTURE

## IMPORTANT DECISIONS TO BE MADE.

Making or amending a will is a very personal decision and raises many important questions. We understand you will want to think about these in your own time, on your terms and with your family in mind.

If leaving a legacy is something you have considered, this leaflet provides information on leaving a legacy to Edge Grove School.







## WHY CONSIDER EDGE GROVE IN YOUR WILL?

You may have fond memories of being a pupil and have benefitted from the foundations Edge Grove gave you as a child. Or one or more of your children have similarly benefitted. Perhaps you support our ethos and principles and want to contribute to their continuation?

Whatever your reasons, you can be assured that when you leave a legacy to Edge Grove, your gift will be used to maintain the high quality of education and facilities for future generations.

A gift in your will can be a tax efficient way of making a significant donation to Edge Grove that may be unaffordable during lifetime.

Any gift to a registered charity made in your will, whether in the form of cash, shares, property, or other items, is deducted from your estate before Inheritance tax is calculated and therefore can reduce the tax liability on your estate.

Such bequests may be changed during your lifetime if your situation changes.

## HOW WILL MY GIFT SUPPORT EDGE GROVE?

Current School fees primarily cover today's educational costs but charitable and philanthropic support is critical to support wider activities, especially those requiring long-term investment. Legacies, in the form of unrestricted gifts, enable the School to direct funds to areas of greatest need.

The School has two main areas of fundraising: bursaries and development.

Bursaries enable the School to continue its proud and long-standing tradition of nurturing talent by ensuring access for children whose parents may not have the funds to pay the fees.

In a typical academic year, 16 pupils have been able to benefit from means tested financial assistance, some of whom received a bursary of 90% or more.

Edge Grove's 'One School' vision outlines the ten year development plan for the School. This ambitious plan requires a considerable level of investment and whilst Edge Grove allocates a significant proportion of its finances each year to development, any gifts made through legacies will enable our development goals to be reached earlier.





## HOW CAN I SUPPORT THE SCHOOL WITH MY LEGACY?

There are several types of legacy from which Edge Grove may benefit:

### **I. Pecuniary Gift**

This is a specific sum of money.

### **II. Specific Gift**

This is a gift of a particular item, or group of items, including property or stocks and shares.

### **III. Residuary Gift**

This is a gift of the remainder (or a set proportion of the remainder) of the estate after payment of the administration expenses, creditors' claims, and other bequests.

### **IV. Substitutional Gift**

A specific sum or share of your estate may be bequeathed to a particular person or persons but if they pre-decease you, the bequest would pass to Edge Grove School.

### **V. Reversionary Gift**

Named individuals, such as one or more family members or friends, may benefit from some or all of your estate during their life. The estate would be left on trust so that the named beneficiaries would be entitled to the income generated by the assets during their lifetime, with the whole, or a share of the estate passing to Edge Grove following their deaths.



## LEGAL ADVICE

We recommend obtaining appropriate advice, for example from a solicitor, bank, or professional will writer, prior to making any bequest to the School.



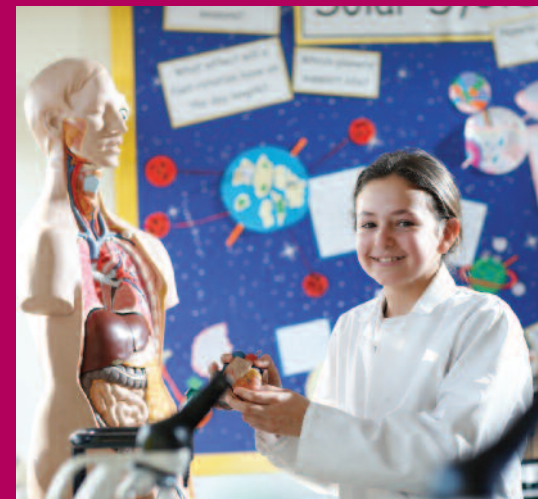
## WHAT IF I HAVE ALREADY MADE A WILL?

If you have already made a will and would like to make a gift to Edge Grove you can easily do so by adding a codicil. This is an additional document that can be kept with your will.



## BEQUESTS FOR SPECIFIC PURPOSES AND LETTERS OF WISHES

The School naturally welcomes all bequests; ones left freely to the School to use as they see fit give the most flexibility. However, we recognise that some donors may have specific purposes in mind for their generosity and may wish to state this in their will. We are always ready to discuss such arrangements if that would be helpful in framing your bequest. Alternatively, a letter of wishes, which is not part of the will, may be used to indicate how you wish the bequest to be used. The School would always try to honour clearly expressed wishes though we have to point out that such documents are not legally binding.





## NOTIFYING EDGE GROVE

The form included in this brochure, also obtainable from the School website, may be used to inform the School of any bequest.



## THE LION SOCIETY

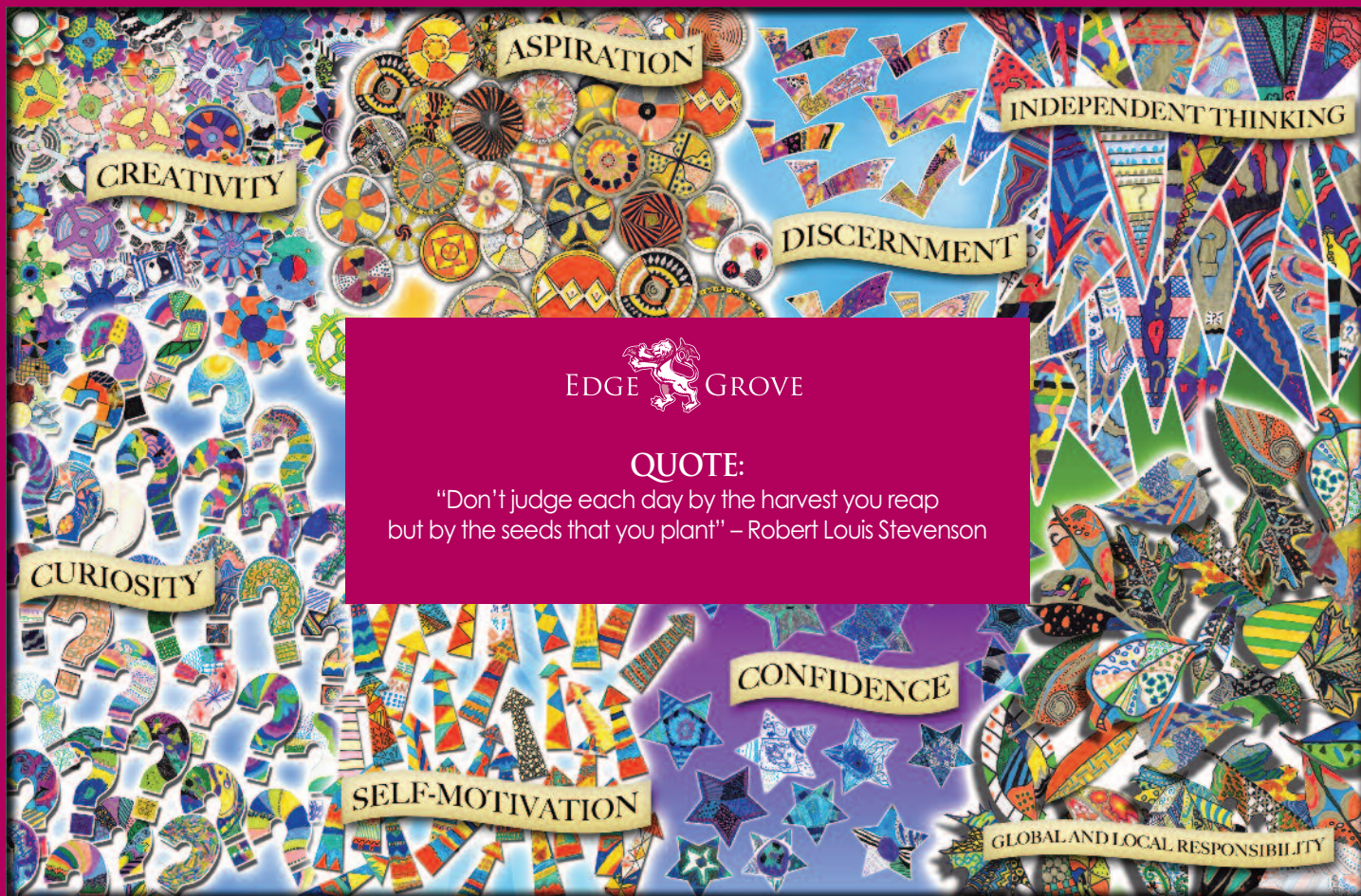
The Lion Society has been established to recognise the distinguished group of individuals dedicated to helping Edge Grove through legacies. Everyone pledging a legacy to the School becomes a member. They will be updated on the School's progress every year and will be invited to Lion Society annual events, receive invitations to other school events and receive a copy of the annual School publication 'Life at the Edge'.

Bequests will be acknowledged upon receipt in this annual school publication, unless anonymity is requested.



**FOR MORE INFORMATION ON HOW TO LEAVE A GIFT,  
EMAIL [DEVELOPMENT@EDGEGROVE.COM](mailto:DEVELOPMENT@EDGEGROVE.COM)**





### QUOTE:

"Don't judge each day by the harvest you reap  
but by the seeds that you plant" – Robert Louis Stevenson