

## Health and Safety Policy

Policy reviewed by	Bursar
Date Reviewed on	15th October 2025
SLT Review Period	Annually
Next SLT (Bursar) Review Date Due	August 2026
Governor Review Period	Annually
Governing Committee	FGB
Approved by Governors On	November 2025
Next Governor Review Due	November 2026

## Contents

SECTION 1 – HEALTH & SAFETY STATEMENT OF INTENT	3
SECTION 2 - ORGANISATION	4
HEALTH AND SAFETY ORGANISATION	4
THE DUTIES OF THE GOVERNING BODY	5
THE DUTIES OF THE HEAD	5
THE DUTIES OF THE BURSAR	5
HEALTH AND SAFETY COMMITTEE	6
THE DUTIES OF HEADS OF DEPARTMENT	7
THE DUTIES OF ALL MEMBERS OF STAFF	7
AREAS OF INDIVIDUAL RESPONSIBILITY	8
SECTION 3 - ARRANGEMENTS	9
CODES OF PRACTICE AND SAFETY RULES	9
CONSULTATION & COMMUNICATION	10
RISK ASSESSMENTS	10
TRAINING	10
FIRST AID & ACCIDENT INVESTIGATION	11
MAINTENANCE OF PREMISES, GROUNDS & EQUIPMENT including MANAGEMENT OF ASBESTOS & LEGIONELLA PREVENTION	11
SITE SECURITY	12
PERMITS TO WORK & SAFE SYSTEMS AT WORK	13
DISPLAY SCREEN EQUIPMENT	13
PROVISION OF PERSONAL PROTECTIVE EQUIPMENT (PPE)	13
CONTROL OF SUBSTANCES HAZARDOUS TO HEALTH (COSHH)	14
ELECTRICAL SYSTEMS & ITEMS	14
FIRE SAFETY	14
NOISE	15
MANUAL HANDLING	15
Duties of Managers and Heads of Department	16
Duties of All Members of Staff	16
SLIPS, TRIPS & FALLS	16
CONTRACTORS & HIRERS	16
MOVEMENT OF VEHICLES ON SITE	17
EMERGENCY PLANS	18
OCCUPATIONAL HEALTH SERVICES AND MANAGING WORK-RELATED STRESS	18
WORKSHOP SAFETY	18
EXPECTANT MOTHERS	19
REVIEW	20
APPENDIX 1 – EMERGENCY CONTACT DETAILS	21

# HEALTH AND SAFETY POLICY

## SECTION 1 – HEALTH & SAFETY STATEMENT OF INTENT

Edge Grove is committed, through all levels of its management and operation, to take steps to make sure that so far as is reasonably practicable:

- All pupils (of every age including those in EYFS), staff, parents, carers, visitors and contractors are safeguarded in respect of health, safety and welfare whilst they are on the school site or otherwise performing the business of the school.
- No work is carried out by the school or its contractors which is liable to expose pupils, staff, parents, visitors or contractors to hazards to health, without first having made suitable and sufficient assessments of the risk and having instituted necessary measures to prevent or adequately mitigate against any risks.
- All contractors working on the school site or otherwise employed by the school provide suitable undertakings, and can demonstrate that they have suitable arrangements for securing proper health and safety including insurance policies to cover public liability and, where necessary, the provision of a written statement of policy.

The Board of Governors has the ultimate responsibility for the implementation of the school's Health & Safety Policy and, through the Health & Safety Organisation structure, will seek to ensure that the requirements of all health and safety legislation are established (i.e. the provisions of the Health and Safety at Work Act 1974, the Management of Health and Safety at Work Regulations 1999 and all subsequent regulations, including those implementing EC Directives). The Head is responsible for implementation of the policy within the school.

### **The School's Health & Safety objectives are to:**

- Provide conditions and work arrangements for its pupils, staff, parents, carers, visitors and contractors which mitigate and, where reasonably practicable, prevent any danger to health. This requires that risk assessments be carried out as appropriate to enable hazards to be identified, thereby enabling appropriate standards of safety to be adopted and enforced.
- Keep the health, safety and welfare of pupils, staff, parents, visitors and contractors under review by management, at all levels, throughout each academic year.
- Provide adequate information, instruction, training and supervision for its employees, including temporary and fixed contract staff and contractors, to enable them to adopt good safety practices.
- Co-operate actively with local authorities, public services and statutory bodies in the interests of health and safety.
- Ensure that all items of plant and equipment operated on the school premises, or in the furtherance of school business, are maintained properly and used only when proper risk assessments and training have been carried out.
- Ensure that safe arrangements are made for the storage, handling and transportation of articles of equipment and substances.
- Ensure that all fire prevention measures and documentation are kept up-to-date.

This policy requires the full cooperation of every person whenever they are on the school site or carrying out School business. All pupils, staff, parents, carers, visitors or contractors operating on the school site or otherwise performing the business of the school therefore have an obligation to:

- Take reasonable precautions in safeguarding the health and safety of themselves and others.
- Observe all health and safety rules and procedures as laid down by the school, and use all health and safety equipment provided.

- Alert management to any potential hazard that they have noticed and report all accidents, incidents or near misses that have led, or may lead to, illness or damage.

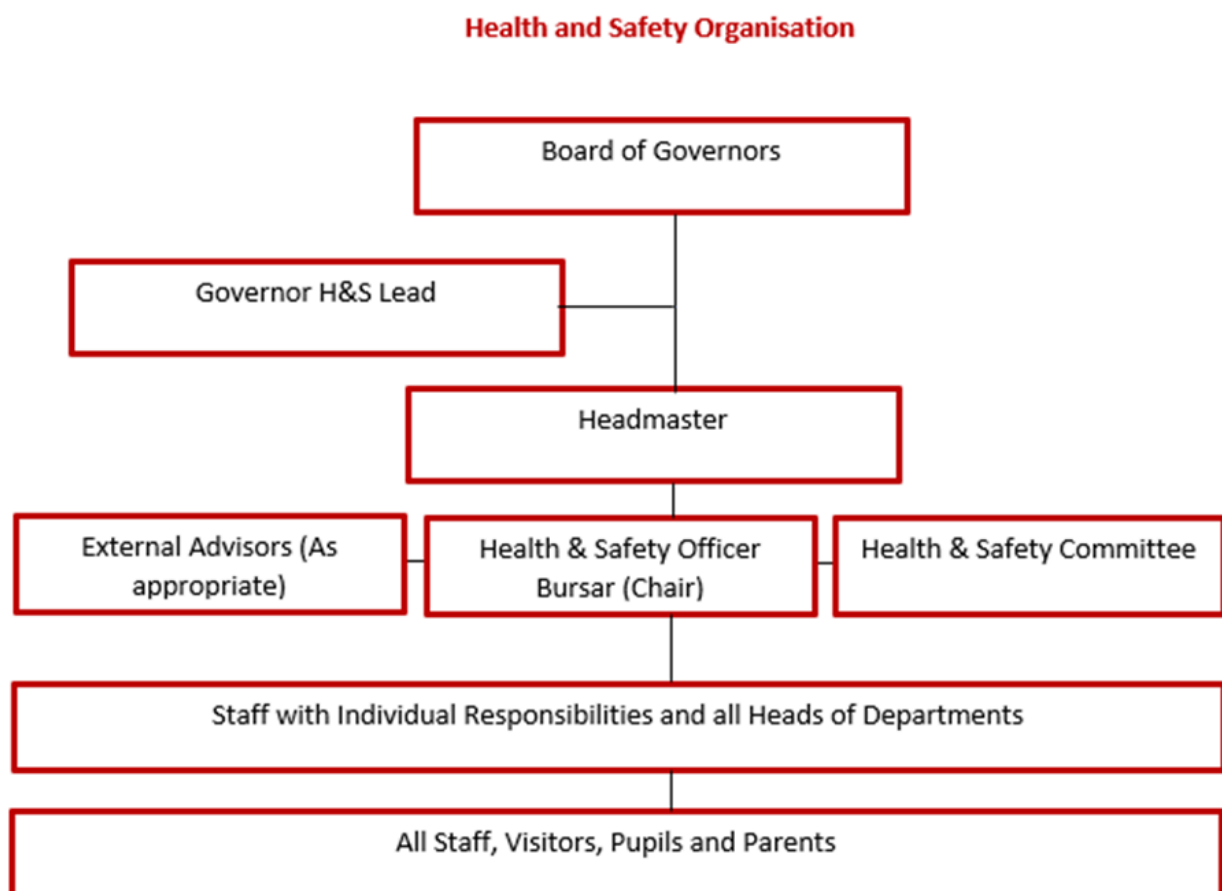
Health and Safety is a line management responsibility within the school and will be exercised through the school's management structure under the direction of the Headmaster, who delegates to the Health and Safety Officer / Bursar. The Health & Safety Committee is a 'virtual group' who reports termly, to the Governor with responsibility for Health & Safety, as part of his / her overall oversight role.

This policy will be reviewed at least annually and revised as necessary to ensure it remains fully effective.

## SECTION 2 - ORGANISATION

### HEALTH AND SAFETY ORGANISATION

The overall responsibility for Health and Safety within the School lies with the Governing Body who will have due regard for the guidance published by DfE as: Health and Safety: Responsibilities and duties for Schools - April 2022. This policy applies to all areas of the School including the EYFS in the Junior Department.



## **THE DUTIES OF THE GOVERNING BODY**

In the discharge of its duty the Governing Body, in consultation with the Head, will ensure the adequate provision of resources to:-

1. Ensure that there is an effective and enforceable policy for the provision of health and safety throughout the School
2. Assess annually the effectiveness of this policy and ensure that any necessary changes are made
3. Create and monitor an appropriate management structure.

## **THE DUTIES OF THE HEAD**

The Head is required to take all necessary and appropriate action to ensure that the requirements of all relevant legislation, codes of practice and guidelines are met in full at all times. In practice, day to day responsibility for all aspects of Health & Safety Management, including the Chairing of the Health & Safety Committee, is delegated to the Bursar.

The Head will:-

1. Be aware of the basic requirements of the Health and Safety at Work Act 1974 and any other Health and Safety legislation and codes of practices relevant to the work of the School
2. Ensure, so far as is reasonably practical, that the Bursar is competent to undertake their Health & Safety responsibilities.
3. Ensure that the School policies and systems actively support the Health & Safety policy of the School.
4. In conjunction with the Bursar, ensure that sufficient resources are allocated for the School to meet its Health & Safety responsibilities.
5. Be available for consultation with all members of staff on Health and safety issues
6. Monitor the standard of Health and Safety throughout the School, including all School-based activities, encourage staff, pupils and others to achieve the highest possible standards and discipline those who consistently fail to consider their own well-being or the health and safety of others

## **THE DUTIES OF THE BURSAR**

The Bursar has responsibility for the day-to-day maintenance and development of safe working practices and conditions for teaching staff, non-teaching staff, pupils, visitors and any other person using the premises or engaged in activities sponsored by the School.

The Bursar will take all reasonably practicable steps to achieve this end with the active involvement of members of the Health & Safety Committee, members of staff, and others as appropriate.

The Bursar's Health & Safety responsibilities include:-

1. To Administrate the Virtual Health and Safety Committee (on behalf of the Headmaster).
2. To facilitate all Health & Safety Committee termly reviews with input reports from the Staff with individual Responsibilities and Head of Departments. To ensure escalations and actions can be initiated within agreed timings. To ensure all paperwork mentioned above is sent to the Governor with responsibility for Health & Safety, for his her review within the same time limits above.
3. Arranging systems of risk assessment to allow the prompt identification of potential hazards.
4. Carrying out periodic reviews and annual safety audits on the findings of the risk assessment and preparing reports for consideration by the Health & Safety Committee.
5. Collating accident and incident information and, when necessary, carrying out accident and incident investigations.
6. Ensuring that the Health & Safety training needs of both staff and pupils are identified and that adequate and appropriate training is provided.
7. Encouraging staff, pupils and others to promote Health and Safety.

8. Ensuring the effective communication of relevant Health & Safety information.
9. Ensuring that any defects in the premises, its plant, equipment or facilities which relate to or may affect the Health and Safety of staff, pupils and others are made safe without undue delay.
10. Ensure that emergency plans are prepared to cover all foreseeable major incidents which could put at risk the occupants or users of the School.
11. Monitoring first aid and welfare provision.
12. Monitoring the management structure, along with the Head and Governors.
13. Liaising with the HSE, the School's insurers and other external bodies.
14. Reviewing reports submitted by the Lead Nurse as required by RIDDOR.
15. Identifying the implications of changes in legislation or HSE guidance.
16. Ensuring the appointment and then publication of contact details for the Appointed Person (see Appendix 1 – list of contact numbers)

## **HEALTH AND SAFETY COMMITTEE**

The Head appoints a Health and Safety Committee which is chaired by the Bursar on his / her behalf:

Health & Safety Committee comprises:-

Head

Bursar / Health & Safety and Fire Officer	(Chair)
Bursar' Assistant	(Administrator)

Deputy Head (Academic, Middle School)

Deputy Head (Pastoral) / Designated Safeguarding Lead

Asst. Head (Logistics & EVC)

Asst. Head Junior Department

Asst. Head Digital Development Manager

School Nurse

Environmental Officer

Director of Sport

Head of Science

Head of Art

Head of Design Technology

Head of Drama & Performing Arts

Director of Music

Estates Manager

Facilities Manager

Catering Manager	(employee of catering contractor)
------------------	-----------------------------------

Each member of the Health & Safety Committee is responsible for the enhancement of Health & Safety within the School. This includes being responsible for the risk assessment process within their department and liaising with other members of staff as appropriate. The Committee shall submit reports at least termly and more often as may be deemed appropriate by the Chair. The termly reports will be submitted to the Finance and Estates Committee the agenda for each meeting shall include:-

1. Review of accident records and reports; ensuring appropriate preventative measures are put in place.
2. Review of Health & Safety legislation as appropriate.
3. Review of individual School areas of activity.
4. Review of risk assessments.

5. Consideration of staff Health & Safety concerns and recommending appropriate remedial action.

## **THE DUTIES OF HEADS OF DEPARTMENT**

In addition to the general duties which all members of staff have, they will be responsible to the Head through the Bursar for the implementation and operation of the School's Health and Safety Policy within their relevant Departments and areas of responsibility.

They will be responsible for identifying potential hazards within their Departments and writing appropriate risk assessments.

They will be aware of the School's Health and Safety Policy and ensure its promotion and application within their department.

As part of their day-to-day responsibilities they will ensure that:-

1. Safe methods of working exist and are implemented throughout their department.
2. Staff, pupils and others under their supervision receive such information, instruction, training and supervision as required for the implementation of the School Health & Safety policy. This includes the induction training of new members of staff.
3. Regular safety inspections are made of their area of responsibility as required by the School's policy.
4. Positive, corrective action is taken where necessary to ensure the Health and Safety of all staff, pupils and others.
5. All plant, machinery and equipment in the Department in which they work is adequately guarded, is properly maintained and is only used and serviced by authorised and suitably trained personnel.
6. Appropriate protective clothing, equipment and first aid provision are readily available in the Department in which they work.
7. Toxic, hazardous and highly flammable substances in the Department in which they work are correctly used, stored and labelled.

## **THE DUTIES OF ALL MEMBERS OF STAFF**

All members of staff should:-

1. Take reasonable care of their own Health and Safety and any other persons who may be affected by their acts or omissions at work.
2. As regards any duty or requirements imposed on his or her employer or any persons by or under any of the relevant statutory provisions, co-operate with him or her so far as necessary to enable that duty or requirement to be performed or complied with.

In particular all members of staff will:-

1. Be familiar with the School's Health & Safety policy.
2. Not make or allow the unauthorised or improper use of plant, machinery and equipment.
3. Use the correct equipment and tools for the job and utilize any protective equipment or safety devices which may be supplied.
4. Not carry out or permit others to carry out unauthorised servicing or modification of plant, equipment and machinery.
5. Ensure that toxic, hazardous and highly flammable substances are correctly used, stored and labelled.

6. Report any Health & Safety concerns in the premises, plant, equipment and facilities which they observe to the appropriate person.
7. Observe the smoking policy that prevents smoking in any building or outdoor area within the proximity of children.
8. Report accidents, incidents or near misses as appropriate.
9. Take an active interest in promoting Health and Safety and suggest ways of reducing risks.
10. Ensure that all Health & Safety training (both online and class based) required by the School is completed in a timely and professional manner

## AREAS OF INDIVIDUAL RESPONSIBILITY

The following members of staff have immediate and major responsibilities for Health and Safety in both risk assessment and the management of risk & preventative/control measures in the areas indicated below:-

General Site Hazards	Asst. Head Digital Development Manager
Hazards (Machinery & Electrical)	Asst. Head Digital Development Manager
Hazards (Classrooms & Playgrounds)	Deputy Head (Academic) Assistant Head Middle, Asst. Head Digital Development, Estates Manager
Hazards (Junior Department)	Assistant Head Junior, Estates Manager
Hazards (Nursery)	Assistant Head Junior, Estates Manager
Hazards (Apthorp Building)	Deputy Head Middle, Estates Manager
Hazards (Swimming Pool)	Director of Sport, Estates Manager
Hazards (Sports Facilities)	Director of Sport, Estates Manager
Fire Safety	Fire Officer (Bursar), Estates Manager
Critical Incident Planning	Head, Bursar, SLT
Substances Hazardous to Health	Heads of: Science, Technology & Art, Estates Manager, Catering Manager
Kitchen & Food Tech Room	Catering Manager, Estates Manager, Lead Teacher of Technology
Manual Handling	Estates Manager, Bursar
Slips Trips & Falls	Estates Manager, Bursar
Display Screen Equipment	Bursar
First Aid	School Nurse, Director of Sport
Injury Reporting	Deputy Head (Pastoral), Director of Sport, School Nurses,
School Outings	Organisers of School trips to follow School Policy with Educational Visits Coordinator and Appendix 2 – Educational Visits Policy and Staff Handbook, Section 9
Safer Recruitment	Bursar

Single Central Register	Chair of Governors, Head, Bursar, HR Manager
Controlling Contractor Activity	Bursar, Estates Manager
Safety Representatives	H&S Committee Members
Induction Training & Procedures	Head, Bursar (& Fire Officer), Designated Safeguarding Lead
Vehicles on site / Minibuses	Bursar, Estates Manager
Working heights over 2 metres	Estates Manager
Legionella Hazards	Estates Manager
Management of Asbestos	Estates Manager
Statutory Notices Bursar	Bursar
Estates Security	Bursar, Estates Manager
School Security/Violence to Staff	Bursar, Deputy Head Pastoral
Grounds Maintenance	Estates Manager
Use of Kiln	Head of Art, Estates Manager
Machinery	Estates Manager
Cleaning	Catering Manager, Bursar, Estates Manager
Occupational Health & Work Related Stress	Bursar, HR Manager
Disposal of Hazardous Waste	Head of Science, Estates Manager
Plant & Equipment	Estates Manager
Monitoring and Review	H&S Governor, Bursar, H & S Committee
Technology Workshop	Lead Teacher of Technology, Estates Manager

### SECTION 3 - ARRANGEMENTS

#### **CODES OF PRACTICE AND SAFETY RULES**

In consultation with the Governing Body (where appropriate) and taking into account the requirements of this statement, the Health and Safety committee will approve (where necessary) codes of practice for the observation of safety requirements in School.

From time to time the Department for Education (DfE), the Health and Safety Executive (HSE) and other regulatory or advisory bodies will issue codes of practice on particular topics for the guidance of Heads and others who are in control of educational premises, who will normally incorporate such codes of practice into their Health and Safety policy and procedures. If the Head considers the inclusion of all or any such documents into this policy to be inappropriate, he or she will be required to demonstrate to the satisfaction of the Governing Body that he or she has already introduced codes of practice and methods of working which achieve a similar or higher standard of Health and Safety.

## **CONSULTATION & COMMUNICATION**

The Governing Body, through the Head, will make arrangements for the establishment of a Health and Safety committee by incorporating agenda items on Health and Safety matters into existing consultative groups. Representation of this committee will cover all appropriate areas of work or special hazards.

The composition of the Committee is included in Section 2.

The School views consultation between staff and management as an important part of developing a proactive H&S culture. Consultation will be provided by various means including:-

1. Health & Safety Committee
2. Health & Safety Policy
3. Health & Safety notice boards and signage
4. Staff handbooks

The School will ensure effective communication and consultation takes place by:-

1. Ensuring all staff are provided with staff handbooks and that all new staff are properly inducted.
2. Ensuring staff receive safety information appropriate to their areas or levels of responsibility.
3. Committee meetings are held no less than termly and reports are completed by all members.
4. Ensuring that staff are able to voice any concerns to the appropriate authority, including the Head.
5. Health & Safety is placed on the agenda for all relevant Governors' meetings.

## **RISK ASSESSMENTS**

The Bursar will ensure that risk assessments of the premises, methods of work and all School-sponsored activities are conducted annually (or more frequently, if necessary). See also the School's Risk Assessment Policy. The risk assessments will seek to identify all defects and deficiencies, together with the necessary remedial action or risk control measures. The results of all such risk assessments will be reported to the Bursar and shared with staff so that they understand the hazards, the measures already put into place, the remaining risk levels and what preventative action must be taken by them. Individually named members of staff will be required to "champion" every room/area of the School and certify compliance of that room/area with the relevant risk assessment(s). All instances of non-compliance are to be reported via the maintenance reporting protocol or as an H&S emergency as appropriate. The Early Years setting have their own set of risk assessments specific to the age of the children and regulations for the EYFS, and they complete daily check lists to ensure the safety of the areas prior to the children entering the setting.

## **TRAINING**

Health and Safety training will be provided for staff, contractors and visitors as appropriate.

On joining the School, or at the first opportunity, basic health and safety training will be provided covering, in particular, the fire safety arrangements, exit routes and assembly points for the School. Other mandatory interactive training modules that are required of all staff annually include fire awareness, generic health & safety, and working with display screen equipment as appropriate.

An in-house briefing will be given covering the first aid and accident reporting procedures.

Wherever a risk assessment has identified that specialist training is required to safely carry out a particular task or use a piece of equipment safety training will be given either by the School or by an external agency to provide sufficient information, instruction and training as to reduce, so far as is reasonably practicable, the risk to the affected persons.

Training will be repeated and updated as required.

## **FIRST AID & ACCIDENT INVESTIGATION**

The arrangements for first aid provision will be adequate to cope with all foreseeable major incidents.

In addition to the School Nurse, there will be an appointed person with a Full Paediatric First Aid Qualification within the EYFS and Junior Department staff.

At the discretion of the Governing Body other staff will be given such training in first aid techniques as is required to give them a basic, minimum level of competence. The Governing Body will agree to this level after seeking appropriate advice. The number of such trained but uncertificated first-aiders will be determined by the Governing Body as being sufficient to meet the needs of all foreseeable circumstances.

Supplies of first aid material will be held at various locations throughout the School, primarily within the Health Centre, the Junior Department and EYFS as determined by the First Aid Policy of the School. Arrangements for First Aid will be prominently displayed and all staff will be advised of these. First Aid materials in all locations will be checked regularly and any deficiencies made good without delay.

Adequate and appropriate first aid provision will form part of the arrangements for all out-of-School activities. A record will be made of each occasion any member of staff, any pupil or any other person receives first aid treatment either on the School premises or as part of a School-related activity. The health and safety committee will receive information about all reportable accidents and investigate them to determine the correct course of action to reduce the risk of the accident happening again. Each accident report form is subject to a formal investigation and report process so that any amendments to process, procedures or repairs are signed off by the responsible person and the Health & Safety Officer. The Bursar will determine whether an accident is reportable to the HSE. In the absence of the Bursar, the member of staff dealing with the incident should contact the School's appointed Safety Consultant (Competent Person) – see Appendix 1 below for contact details.

## **MAINTENANCE OF PREMISES, GROUNDS & EQUIPMENT including MANAGEMENT OF ASBESTOS & LEGIONELLA PREVENTION**

The School will take all reasonable steps to ensure the safety of all employees maintaining the premises, grounds and machinery as well as the safety of those affected by the maintenance work. The School will liaise with the suppliers of all new machinery to establish how that machinery should be maintained and operated safely. The maintenance department will ensure that all appropriate equipment is logged and maintenance/servicing recorded in accordance with manufacturer's recommendations.

The School has been surveyed for the presence of asbestos on a non-intrusive basis and the report and subsequent action & management log is held in the Bursar's office. Intrusive sampling is conducted as required prior to any maintenance or building works in potentially affected areas. All

contractors are made aware of the findings and are briefed on the potential for the presence of asbestos prior to starting work.

In conjunction with water treatment consultants, the School has established a routine for the prevention of legionella and this, together with all actions undertaken, are logged and held by the maintenance department.

The School will seek to inform and train personnel to implement this policy. The implementation of the policy needs the cooperation of all management and staff.

The School will, in consultation with the maintenance staff and their representatives:-

1. Carry out an assessment of any remedial or repair work required for the premises and grounds and task specific staff, whether internal or external, to carry out this work
2. Avoid work at heights or with live electrical equipment wherever possible
3. Avoid manual handling wherever possible
4. Cordon off work areas to restrict unauthorised entry wherever possible
5. Carry out an assessment of how the machinery should be isolated to enable maintenance work to be carried out safely including when guards have been removed
6. Take appropriate measures for the protection of any person carrying out maintenance operations which the assessment has shown to involve risk to health or safety
7. Provide any training and personal protective equipment that might be necessary for staff in all areas of the School to operate equipment safely
8. Ensure that employees are aware of the reporting procedures, so that a responsible person is informed of any problems as soon as they arise and remedial action can be taken.

## **SITE SECURITY**

The main school site is a relatively rural and open one with low fences at the boundaries. There are footpaths adjacent to the west side of the School perimeter; running across the main sports pitches and the main driveway is crossed by a public bridle path. The School regularly reviews the security of the site and assesses the risk to both persons and property in order to arrive at a reasonable level of security for the site. The site has automatic electric gates at each end of the drive and to the north of the bridle path crossing to deter vehicle access out of hours.

All buildings are covered by a monitored burglar alarm; there are separate ones for the main house and other buildings and these are separately set at night by the Cleaning or Resident Staff respectively. External doors on main buildings are covered by an external access control system. The Junior department is protected by a perimeter fence with access control on all gates including that from the Sports Hall car Park.

The main school site is covered by an array of 30+ exterior and 5 interior CCTV cameras.

Staff are required to wear their ID Cards at all times. Different coloured lanyards are used to designate staff (including volunteers and activities personnel), visitors, unescorted visitors and Governors. Visitors are required to sign in at the front office; the majority of visitors are required to be escorted; unescorted status may only be agreed by the members of senior staff with Safer Recruitment training and only if necessary for the School business and they have a current DBS and photo ID. Staff are asked to be vigilant at all times and, subject to the maintenance of personal security at all times, to challenge anyone not wearing a lanyard. See Section below on arrangements for Visitors.

The Staff Handbook gives further guidance to staff on site security.

## **PERMITS TO WORK & SAFE SYSTEMS AT WORK**

As part of the duties under Section 2 of the Health and Safety at Work Act 1974 the School has introduced permits to work for the following work activities:-

1. Hot work
2. Lone working
3. Electrical work
4. Excavation work
5. Work at height.

It is the intention of the School to introduce new or modify existing permits to work as necessary and to review their use as appropriate.

The permit to work system applies to all work carried out on site and employees, contractors and all visitors are expected to comply with the requirements of any permits that are in force.

Should employees experience any problems with the operation of permit to work systems, they should immediately inform a responsible person (usually the Bursar or the Site Manager) so that the School can investigate and rectify the situation.

## **DISPLAY SCREEN EQUIPMENT**

All reasonable steps will be taken by the School to secure the health and safety of employees who work extensively with display screen equipment (DSE).

The School acknowledges that health and safety hazards may arise from the use of this equipment. It is the intention of the School to ensure that any risks are reduced to a minimum. Whilst it is generally recognized that the use of DSE can be undertaken without undue risks to health, it is appreciated that some employees may have genuine reservations and concerns. All regular users of DSE will be required to undertake an annual Health & Safety Training programme that includes a module on DSE and, within that module, the completion of a risk assessment of the DSE being used for the training (which should therefore be their normal workstation). The School will take all necessary measures to remedy any risks found as a result of the assessment.

The School will advise existing staff, and all persons applying for work with DSE, of the risks to health and how these are to be avoided.

## **PROVISION OF PERSONAL PROTECTIVE EQUIPMENT (PPE)**

The School will provide personal protective equipment when the risk presented by a work activity cannot be adequately controlled by other means. It is the intention of the School to ensure, through the proper use of this equipment, that any risks are reduced to a minimum.

Whilst it is generally recognized that the use of PPE can be undertaken without undue risks to health, it is appreciated that some members of staff may have genuine reservations and concerns. The School will seek to give information and training to enable a fuller understanding of these issues.

The implementation of this policy requires the total co-operation of all members of management and staff. There will be full consultation with staff through existing channels of communication.

The School will, in consultation with staff, carry out an assessment of all work activities to determine whether PPE is required and what types may be suitable for both the task and the member of staff. The School will implement steps for cleaning and maintenance of the PPE, train staff in the safe

use of PPE for all risks within the organization and replace PPE, which has been provided to meet a statutory obligation, as necessary and at no cost to the employee.

## **CONTROL OF SUBSTANCES HAZARDOUS TO HEALTH (COSHH)**

The School acknowledges that no substance can be considered completely safe. All reasonable steps will be taken to ensure that all exposure of staff, pupils and visitors to substances hazardous to health is prevented or at least controlled to within statutory limits.

All members of staff will be provided with comprehensive information and instruction on the nature and likelihood of their exposure to substances hazardous to health.

The implementation of this policy requires the total co-operation of all members of management and staff.

The School will, in consultation with staff, maintain an inventory of all substances hazardous to health kept on site and limit the exposure of staff, pupils and visitors to those substances so far as is practicable. Where specialist training or equipment is required this will be provided by the School.

The School will give sufficient information and training to ensure full understanding of the hazards to health posed by substances in the workplace and the importance of the control measures provided. Information will also be given to others who may be affected, such as contractors, temporary staff and visitors.

Managers and supervisors of areas that use substances hazardous to health will be given additional training to ensure the proper management of the risks; Cleaners, Science, DT, Estates.

## **ELECTRICAL SYSTEMS & ITEMS**

All reasonable steps will be taken to secure the health and safety of staff who use, operate or maintain electrical equipment. The School acknowledges that work on electrical equipment can be hazardous and it is therefore the School's intention to reduce the risks as far as is possible.

The implementation of this policy requires the total cooperation of all members of management and staff, as well as any contractors hired to carry out work involving electrical equipment.

Where a problem arises related to electricity at work, members of staff must inform a responsible person immediately and the School will then take the necessary measures to investigate and remedy the situation.

The School will, in consultation with staff, ensure that electrical installations and equipment are installed in accordance with the Institute of Electrical Engineers (IEE) Wiring Regulations and maintain the fixed installation in a safe condition by carrying out routine safety testing. In addition all portable and transportable electrical items will be inspected and tested as frequently as required. The frequency will depend on the environment in which the equipment is used and the conditions of usage, i.e. how carefully it is handled.

Live working, unless absolutely necessary, is forbidden in which case a permit to work must be issued before work begins. All staff or contractors who carry out electrical work must be competent to do so, trained and equipped for this work. Records of all electrical work and testing must be maintained.

## **FIRE SAFETY**

As far as reasonably practicable, all steps shall be taken by the School to prevent, or minimize the probability of, all causes of fire.

The School acknowledges that despite these measures it cannot be assumed that fire will never break out. Systems are in place to deal with this eventuality and these will be regularly scrutinised to ensure that they are adequate, i.e. fire evacuation drills, inspections of the means of escape and maintenance of fire warning systems and fire-fighting equipment will take place regularly. A formal Risk Assessment is carried out by external contractors and is updated biennially or following a change of use or purpose or layout of a building or area.

To this end all staff shall be given suitable instruction in basic fire prevention measures. All staff are provided with a copy of the School's Fire Safety Arrangements and are required to complete an interactive training programme on Fire Awareness. Any staff involved in processes or activities that give rise to special fire hazards shall be given appropriate training in avoidance of fire.

Members of staff should report any concerns they have about fire hazards, etc to a responsible person, so that the School can take the appropriate measures to eliminate the problem.

Periodic inspections and assessments shall be carried out to identify fire risks and ensure that appropriate precautions are in place. The School will ensure that housekeeping standards are such as to minimize the risk and development of fire. Effective security precautions shall be taken to minimize the risk of arson both within buildings and on the grounds of the site.

The School will also exercise suitable control over contractors' operations and the fire risks associated with such operations; all contractors working on School premises shall be bound, under the terms of their contract, to comply with the School's conditions for contractors.

Suitable and sufficient assessments of the risks of fire due to electrical failure, smoking or arson have been made and will be updated at regular intervals.

The School will regularly practice evacuations and keep records of these and the testing of fire detection and warning equipment.

## **NOISE**

The School will take all reasonable steps necessary to ensure that the risk of hearing damage to employees who work with noisy equipment or in a noisy environment is reduced to a minimum.

The School also recognizes that noise levels below those which cause hearing damage, in offices for example, can still cause problems such as disturbance, interference with communication and stress and will take all reasonable steps to reduce noise levels as far as possible.

The School will carry out noise exposure assessments and noise level surveys as required. These will be used as the basis for formulating action plans for remedial measures when necessary.

Assessments and surveys will be recorded and updated, particularly when changes in work practice cause changes in noise exposure levels of staff. Where necessary suitable PPE will be provided and staff trained in its use and upkeep.

## **MANUAL HANDLING**

Statistics show that manual handling is one of the most common causes of absence through injury at the workplace. More than one third of lost time accidents are caused in this way. These injuries may often have long-term effects. This policy is intended to reduce the risk of manual handling injuries and to provide guidance on the measures that should be taken to ensure safe lifting and carrying at the workplace.

The School will ensure that operations which involve manual handling are eliminated, so far as is reasonably practicable. Measures to achieve this include ergonomic design of the workplace and activity and the provision of mechanical aids such as trolleys.

An assessment of manual handling activities will be carried out by competent persons. Risks which are identified will be reduced to the lowest level reasonably practicable. Suitable information and training will be provided to persons who are required to carry out manual handling activities. All staff are required to undergo annual interactive Health & Safety training including an annual "Manual Handling" module.

Members of staff will be informed of approximate weights of loads which are handled and objects which have uneven weight distribution.

### **Duties of Managers and Heads of Department**

Managers or heads of department must ensure that:-

1. Manual handling assessments are carried out where relevant and records are kept
2. Staff are properly supervised
3. Adequate information and training is provided to persons carrying out manual handling activities
4. Any injuries or incidents relating to manual handling are investigated, with remedial action taken
5. Employees adhere to safe systems of work
6. Safety arrangements for manual handling operations are regularly monitored and reviewed
7. Staff undertaking manual handling activities are suitably screened for reasons of health and safety, before undertaking the work
8. Special arrangements are made, where necessary, for individuals with health conditions which could be adversely affected by manual handling operations.

### **Duties of All Members of Staff**

Members of staff must ensure that:-

1. They report to management (in confidence, if appropriate) any personal conditions which may be detrimentally affected by the manual handling activity
2. They comply with instruction and training which is provided in safe manual handling activities
3. Their own health and safety is not put at risk when carrying out manual handling activities
4. They use equipment which has been provided to minimize manual handling activities
5. Any problems relating to the activity are reported to a responsible person.

### **SLIPS, TRIPS & FALLS**

The nature of any School is such that there are inevitably areas of change of ground level, occasional uneven paths and muddy spots and the like. Staff are given online training with the School's provider, to minimise the occurrence of such events and heighten awareness of possible areas of danger.

A robust online system of maintenance request is adopted by the school which is available to all staff, who are encouraged to report any deficiency as it occurs without fear of recrimination (see Whistleblowing policy). Dangerous incidents are dealt with as emergency situations and do not require use of a reporting system – these are communicated by phone or radio to the Front Office, Bursar and Site Manager.

## **CONTRACTORS & HIRERS**

The Site Manager together with the Bursar will seek to ensure that hirers, contractors and others who use the School premises conduct themselves and carry out their operations in such a manner that all statutory and advisory safety requirements are met at all times.

All contractors who work on the School premises are required to demonstrate professional competence and experience in their appointed activities/work areas which will include understanding and knowledge of the relevant legislation to ensure safe working practices by their own employees under the provisions of the Health and Safety at Work, etc. Act 1974. They are also required to pay due regard to the safety of all persons using the premises in accordance with Sections 3-4 of the Health and Safety at Work, etc. Act 1974.

All contractors who work on the School premises will be advised of the School's contractors' guidance notes and will be expected to abide by all conditions contained therein.

In instances where the contractor creates hazardous conditions and refuses to eliminate them or to take action to make them safe, the Site Manager will take such actions as are necessary to prevent persons in his or her care from risk or injury.

When the School premises or facilities are being used out of normal School hours for a School-sponsored activity then, for the purposes of this policy, the organiser of that activity, even if a member of staff, will be treated as a hirer and will comply with the requirements of this section.

When the premises are hired to persons outside the employ of the Governing Body, it will be a condition for all hirers, contractors and others using the School premises or facilities that they are familiar with this policy, that they comply with all safety directives of the Governing Body and that they will not without the prior consent of the Governing Body:-

1. Introduce equipment for use on the School premises.
2. Alter fixed installations.
3. Remove fire and safety notices or equipment.
4. Take any action that may create hazards for persons using the premises or the staff or pupils of the School.

The Governing Body draws the attention of all users of the School premises (including hirers and contractors) to Section 8 of the Health and Safety at Work, etc. Act 1974, which is provided in the interests of health, safety or welfare in pursuance of any of the relevant statutory provisions.

## **MOVEMENT OF VEHICLES ON SITE**

Edge Grove is committed to keeping the school grounds safe for pupils and staff alike, without risk from traffic.

Day to day responsibility for planning, monitoring and controlling on site movements and for car parking is delegated to the Bursar, who is assisted by the Site Manager and related Staff. He manages site safety, recommending measures that may be needed to enhance the safety of pedestrians. Risk assessments or Policies are in place covering both site security and School Minibuses.

The School publishes a separate policy for Minibus and Vehicle Movements.

The Bursar is also responsible for liaising with the local education authority over the School Travel Plan and for monitoring achievements against its targets.

## **VISITORS**

The School accepts its responsibility to ensure the health and safety of all personnel who come directly or indirectly into contact with this organisation or the consequences of our activities. The School has devised the following arrangements, which are applicable to visitors to all areas of the School including the Nursery, to enable this responsibility to be effectively discharged:

1. Any special arrangements required by the visitor(s) must be ascertained, where practicable, before arrival. This may include bringing vehicles or other machinery or substances on to site, or providing facilities for disabled persons or those with language difficulties.
2. Upon arrival the visitor(s) must complete required details at the Main School Front Office and be issued with a Visitors ID tag which must be worn visibly at all times. Visitors are to be informed of the risks to which they may be exposed whilst on site and of the emergency arrangements, including the location of assembly points and will be advised of the School's Safeguarding arrangements. Visitors must sign out before leaving the premises and School property must be returned.
3. Any problems encountered by visitors, or by employees with regard to visitors, should be reported to a responsible person so that corrective action can be taken.
4. Adequate supervision must be maintained while the visitor is on site. This includes ensuring the safe handling, transport and use of any articles and substances. Supervision must also be adequate to prevent the visitor from straying into hazardous areas and exposing him or herself to danger. Details regarding arrangements for these, where applicable, must be ascertained and approved before entry is permitted.
5. Full details of emergency procedures must be clearly indicated to visitors before entering the premises and their attention drawn to the Fire Safety notice attached to visitors' badges. Where an emergency arises, measures must be taken by a responsible person to ensure that visitors are accompanied to a place of safety and that they comply with School procedures. Visitors must be accounted for during emergencies and evacuation drills.

## **EMERGENCY PLANS**

The Bursar will ensure that emergency plans are prepared to cover all foreseeable major incidents which could put at risk the occupants or users of the School. These plans will indicate the actions to be taken in the event of a major incident so that everything possible is done to:-

1. Save life.
2. Prevent injury.
3. Minimize loss.

This sequence will determine the priorities of the emergency plan. Details of Fire Evacuation Procedures are posted to all staff notice boards. The plans will be agreed by the Governing Body and be regularly rehearsed by staff and pupils. The result of all such rehearsals will form part of the regular risk assessment survey and the outcome will be reported to the Governing Body.

## **OCCUPATIONAL HEALTH SERVICES AND MANAGING WORK-RELATED STRESS**

The School will provide appropriate occupational health services to staff who may be absent and need assistance in returning to work on either identical or variable duties. The School's employment manual provides full information on the awareness and management of stress and staff are required to complete online training on this topic with the School's online training provider.

## **WORKSHOP SAFETY**

The Bursar and Site Manager will ensure adequate ventilation and dust control in the maintenance facilities and workshop along with control and maintenance of equipment and prevention of pupil access at all times. All dust control is built into the machines or added onto them individually.

## **EXPECTANT MOTHERS**

The School is aware of the susceptibility of women to certain risks that may arise as a consequence of their employment and will assess and document those additional risks, and ensure measures are provided to protect the health and safety of any women employed, so far as is reasonably practicable.

The School is aware of the statutory requirements imposed on, and relating to, work undertaken by women and will comply with these requirements. Women will be given all the information, instruction and training necessary to enable them to work safely and without risks to their health.

The School will take all reasonable steps to safeguard the health, safety and welfare of new or expectant mothers, and of their unborn child.

The School undertakes to assess all risks to new or expectant mothers arising from their work activities and to take appropriate preventive or control measures.

Relevant training will be provided in identifying risks and implementing controls.

The School undertakes to regularly monitor the work undertaken by new or expectant mothers, especially during the development of pregnancy, in order to continually assess the individual's ability to work safely and without risk. All problems identified will be addressed, so far as is reasonably practicable, and all risks will be adequately controlled and safe systems of work established.

The School will also make arrangements for reasonable and appropriate health programmes for pregnant women and determine whether it will be necessary to impose limitations or special arrangements on medical grounds.

## **REVIEW**

The Governing Body will review this policy annually and update, modify or amend it as it considers necessary to ensure the health, safety and welfare of staff and pupils.

This policy specifically applies to all areas of the School including the EYFS.

This policy is reviewed, authorised and approved annually by the Board of Governors and updated as needed on an interim basis by the Bursar, who is the Health & Safety Officer (HSO).